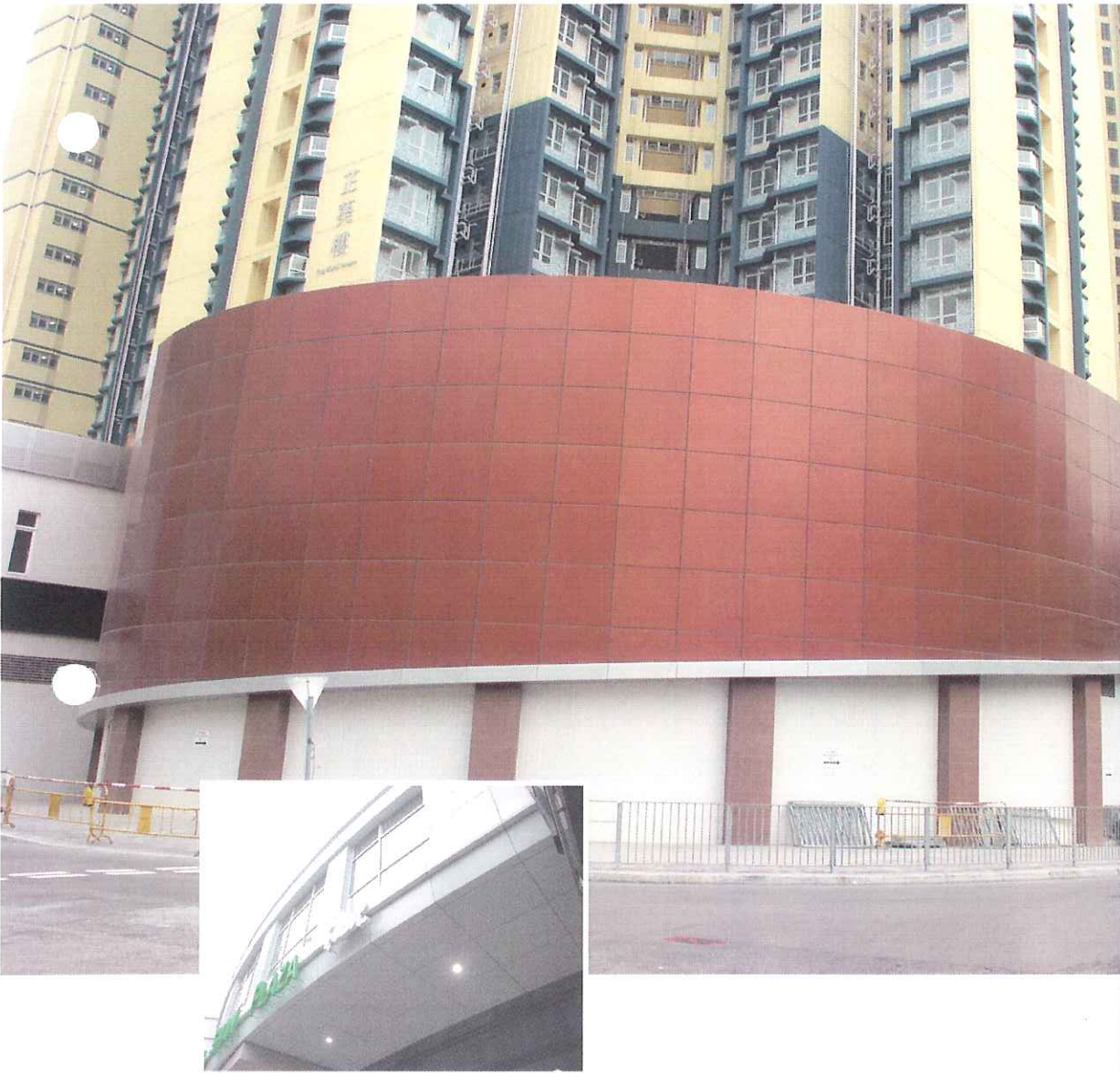


System 500E

Exterior Direct Fixed Cladding

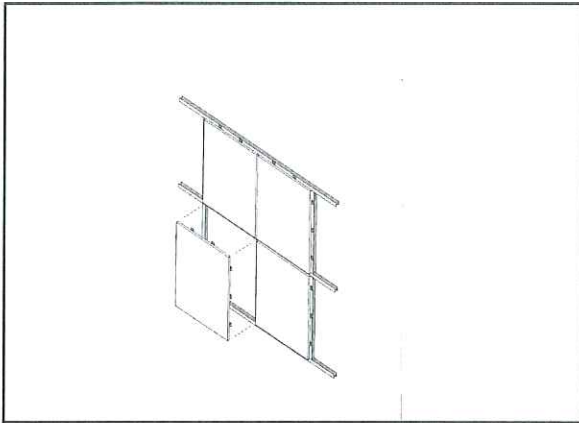


System 500E

Direct Fixed Cladding System

Conventional metal wall cladding fabricated by precision engineering for interior or exterior applications from “**Suckow & Fischer**”





System 500 E – Direct Fixing Metal Cladding System

Conventional direct fixing metal wall cladding is one of most popular system being applied on newly developed or renovated building projects for interior or exterior applications. The system is simply by designing the panel layout in accordance to structural design of the metal sub-frame configuration. Metal wall panels are designed with fixing brackets along the panel upstands on four-side and directly mounted to the metal sub-frame with screws. It is cost effective for large or small wall area. Space in between the panel joints is between 15 to 20mm and to be filled up with approved sealant.

The Sub-structure System

The sub-structure of System 500 E metal cladding consists of metal sub-frame designed based on structural calculation in accordance to the local wind load requirements. The metal sub-frame shall be fixed with GMS wall brackets directly with anchor bolts to the solid wall. All sub-structure design and fixing details should be done by authorized structural engineers to comply with local building ordinance.



Advantages of System 500 E

- Flexible in design configuration for flat or 3-dimensional expression.
- Choice of colour combination to match building design.
- Environmental friendly with recyclable material.
- Combination of mixture of cladding material other than metal.
- Simple and easy installation method.
- Fully demountable without affecting adjacent panels.

The Metal Cladding Panels

The metal wall cladding panel is fabricated with precision-engineered equipment to achieve flat and dimensionally stable surface. The wall cladding panel is fabricated with upstand on four-side of the panel. Panels are fabricated according to approved panel shop drawings provided by cladding contractors. Cladding panels can be fabricated with V-cut edge bending to achieve sharp edging for thick gauge base material. Factory pre-fabricated panel stiffeners are provided for over sized panels upon request by the cladding contractors. Flat or curved cladding panel fabrication is available for round columns or feature application. Panel sheet sizes are recommended to be within 1,100mm in width and 2,300mm in length. Other sizes are available upon request; please consult "Suckow & Fischer" personnel for details.

Perforated & Acoustical Panels

There are choices of perforated pattern for aesthetical or acoustical functions for internal applications under normal circumstances. Acoustical effect can be improved by adding mineral wool or other acoustical pads behind the panels. For more information, please refer to "Suckow & Fischer" Metal Cladding Technical Brochure.

Fabrication Quality & Standards

Ceiling panels are manufactured according to Technischer Arbeitskreis Industrieller Metalldeckenhersteller (TAIM) standards, Germany; together with quality compliance as defined by ISO 9001-2000 quality standards.

Base Material & Finishes

Base material of ceiling panels can be in mill finish aluminium from 2mm to 5mm or electrolytically galvanized steel from 1mm to 2mm or aluminium double skin composite panels from 3mm to 5mm. Finish coating of the panels can have the choices of using high grade polyester powder coating, or coil coated in advanced polymer system,. For more information, please refer to "Suckow & Fischer" Technical Brochure.